

Automatic Doors and Gates (NZ) Limited



New Zealand Importers, Distributors, Consultants and Installers

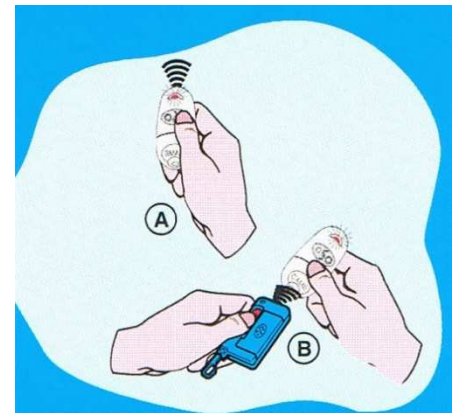
- . Automatic Gate Operator
- . Automatic Sliding Doors
- . Cantilever Gate Equipment
- . Sliding Gate Equipment
- . Securakey Card Readers
- . Inductive Ground Loops
- . Codeable key Pads
- . Gate Designers
- . Road Barriers and Barrier Gates
- . Remote Control Equipment
- . Intercom Systems
- . Gate Manufacturers

Website: www.camegates.co.nz
Mobile Phones: +64-274 924 971 +64-276-343-242
Phone: +64-7-849 4941 Fax: +64-7-849 4907
Email: info@camegates.co.nz

P.O. Box 12055, 35 Mahana Road
Hamilton 3248, New Zealand

CODING INSTRUCTIONS FOR CAME TOP 312NA/432NA TRANSMITTERS

1. Have both old and new transmitter available
2. Remove new CAME 312NA/432NA transmitter from packaging
3. With the new CAME 312NA/432NA transmitter press both of the buttons together until the LED light flashes more quickly (approx 10 seconds)
4. Then press the first button to code. The red LED stops flashing and remains lit continuously. Release the button
5. Within ten seconds bring the old transmitter to the back of the CAME 312NA/432NA transmitter
6. Press the button on the old transmitter, which is one you wish to teach to the new transmitter
7. While continuously pressing the button on the old transmitter, slide the old transmitter underneath the length of the new transmitter (see figure)
8. The new CAME 312NA/432NA transmitter LED will flash three times to indicate it has learnt the new code.
9. Release button on the old transmitter
10. Test the new 312NA/432NA transmitter activation
11. Repeat procedure to code the other button



CODING INSTRUCTIONS FOR CAME TOP 314MA/434MA TRANSMITTERS

1. Have both old and new transmitter available
2. Remove new CAME 314NA/434NA transmitter from packaging
3. With the new CAME 314NA/434NA transmitter press the button you want to program and hold it until the LED stops flashing and remains lit continuously (approx 10 seconds)
4. Within ten seconds bring the old transmitter to the back of the CAME 314NA/434NA transmitter
5. Press the button on the old transmitter, which is one you wish to teach to the new transmitter
6. While continuously pressing the button on the old transmitter, slide the old transmitter underneath the length of the new transmitter (see figure)
7. The new CAME 314NA/434NA transmitter LED will flash three times to indicate it has learnt the new code.
8. Release button on the old transmitter
9. Test the new 314NA/434NA transmitter activation
10. Repeat procedure to code the other button