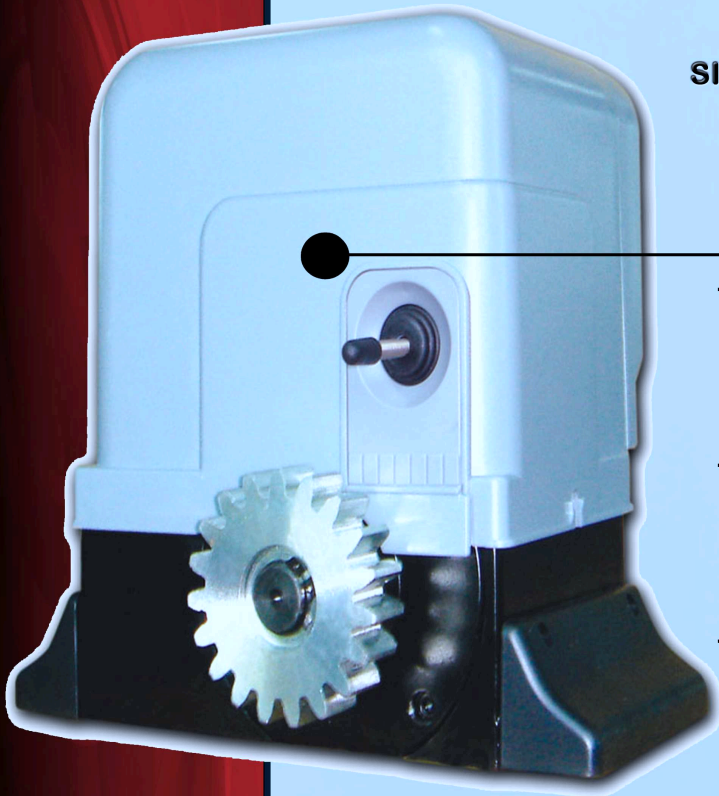




**SIMPLE TO INSTALL AND
EASY TO MAINTAIN:**

ULTRA GATES

*Residential applications,
apartments, housing complexes, etc.*



- **Reliability** thanks to special design and detail: *this model is equipped with the control board incorporated in the unit which is hermetically isolated from the motor to further protect the electronic board from external agents*
- **The possibility of manually opening during a power failure:** *A convenient unlocking key for the manual release function, allowing the user to open the gate manually if required*
- **Safety even when the gate is stopped:** *Every opening or closing command is cancelled when an obstacle is detected by the photocells or by any other safety devices within the installation*

- *The limit switch assembly is fitted for simple and easy set-up and to ensure precise limit adjustment*

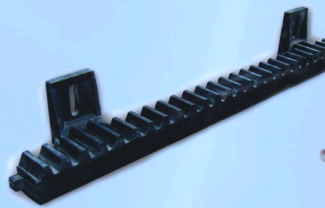
- *An opening command in complete secrecy. By **AUTO-LEARNING** the radio code, the code transfer between the receiver and transmitter takes place*

- *The 24 volt operator can be fitted with a battery back-up feature so the operator works as normal in the case of an un-planned power failure*

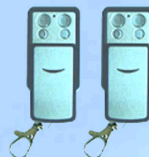
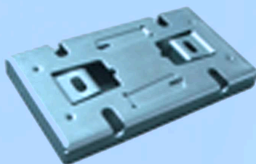
- *Complete with strengthend circuit board cover and 230 Volt in-coming power isolation switch for increased safety*



KIT INCLUDES



1 Sliding gate operator, 1 Control board - built in, 2 Remote controls (433 MHz RC), 1 Remote receiver and antenna, 1 Flashing light with antenna, 1 Pair safety photocells, 1 Manual release key, 2 Limit brackets, 1 Mounting bracket, 4m Fibreglass drive rack, Mounting brackets, Screws, bolts, nuts, washers etc, Installation manual



ULTRA SLIDE UR24-SL OPERATOR

Power supply: 230 VAC 50Hz
 Motor Power: 24V DC
 Motor wattage: 80W
 Current: 3 AMPS
 Motor rotational speed: 1200 r/min
 Gate max weight: 600 KG
 Radio frequency: 433.92 MHz
 Gearbox material: Aluminium
 Thermal protection: 120° C
 Operation temperature: -35° C to +55° C

DEALER STAMP:

Model:
UR-24V-SL

ULTRA GATES

